



THE UNIVERSITY *of* EDINBURGH
The Royal (Dick) School
of Veterinary Studies

Postgraduate Study

Take your career to
extraordinary places.

www.vet.ed.ac.uk/education/postgraduate

EDINBURGH
xtraordinary futures await

Welcome

Thank you for considering postgraduate study at the University of Edinburgh's Royal (Dick) School of Veterinary Studies. Founded in 1823, the School is now a leading modern institution and international centre of excellence.

The Easter Bush Campus represents one of the largest concentrations of animal science-related expertise in Europe. Our students benefit from complementary and interdisciplinary links across the School, which incorporates the Roslin Institute and the Global Academy of Agriculture and Food Systems. Our breadth of expertise enables us to reach beyond clinical veterinary education and to pursue some of the biggest questions facing the world today, such as how our interactions with animals impact the health of animals and humans alike.

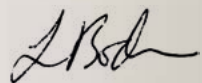
We are committed to giving you an unrivalled learning experience. Our digital teaching platform has a dedicated e-learning team, and online students are supported by team of academic and professional services staff. In-person students benefit from a custom-built campus with extensive facilities designed to create a collaborative, innovative environment, along with all that Scotland's capital city has to offer.

Across these pages, you will find information on postgraduate taught and research programmes, along with short courses you can take as standalone study or build into a programme. With such flexibility across a breadth of subjects, I am certain you will find something that is of interest to you.

Studying with the Royal (Dick) School of Veterinary Studies puts you at the heart of our community and offers opportunities for collaboration as well as access to world-leading research environments.

I very much look forward to welcoming you to the School.

Best wishes,



Professor Lisa Boden
Head of the Royal (Dick) School of Veterinary Studies
and Dean of Veterinary Medicine



Contents

Welcome	2
Facts and figures	4
The School	6
The University	8
Study options	10
Taught programmes	12
Short courses	13
Programme catalogue	14
Research programmes	22
Community	26
How to apply	28
Fees and funding	30
Support and development	31

Facts and figures

Our notable vet alumni are founders of veterinary schools in:

- 📍 Canada
- 📍 USA
- 📍 UK
- 📍 Ireland
- 📍 Australia

£300M+

Has been invested in the Easter Bush Campus.

Groundbreaking

Home to the renowned Roslin Institute, where Dolly the Sheep was created.



1ST

in UK for agriculture, food and veterinary science research together with SRUC (REF 2021).

1ST

in UK for Veterinary Science
(Shanghai Rankings 2023).

2ND

in UK for Veterinary Science
(QS World Rankings 2024).

Consistently Top-rated

in UK for Veterinary Science.

International Diversity

in veterinary education, research and practice.



Our online student community is truly international with a rich range of nationalities represented and students learning from around the world.

The Royal (Dick) School of Veterinary Studies

The Royal (Dick) School of Veterinary Studies was founded in 1823 by William Dick and has a 200 year history of veterinary teaching. Today we are recognised as an international leader in veterinary education, research and practice, and are consistently ranked as one of the top schools in the United Kingdom and globally.

The School is a one-of-a-kind centre of excellence in clinical activity, teaching and research. Our purpose-built campus, set against the backdrop of the beautiful Pentland Hills Regional Park, is home to more than 800 staff and almost 1,400 students, all of whom contribute to our exceptional community ethos.

The School comprises:

- The Roslin Institute
- The Hospital for Small Animals
- Equine Veterinary Services
- Farm Animal Services
- Easter Bush Pathology
- The Jeanne Marchig International Centre for Animal Welfare Education
- The Roslin Innovation Centre
- The Global Academy of Agriculture and Food Systems

We represent one of the largest concentrations of animal science-related expertise in Europe, impacting local, regional, national, and international communities through economic growth, clinical services and the advancement of scientific knowledge. These strengths enable us to attract the highest calibre of teaching staff, scientists and clinicians, fostering a collaborative environment that sustains and expands our partnerships with industry and other stakeholders.



Our campus

The Easter Bush Campus is a purpose-built home for veterinary teaching, research and practice. The campus lies in a rural setting seven miles south of the city centre.

The University of Edinburgh and the Royal (Dick) School of Veterinary Studies are committed to sustainability. With electric car charging points, shower facilities for bike commuters and bike safety checks, recycling initiatives, an apiary, hedgehog tunnels, and a solar farm in operation, we're proud to call Easter Bush a sustainable campus.

Learn more: www.edin.ac/eb-sustainability



The University of Edinburgh

The University has been influencing the world since 1583. We have a long history of making a difference, but it isn't one we take for granted. To this day, we strive to deliver excellence and help address tomorrow's greatest challenges.

You can't plan on changing the world without starting small. It takes an inquisitive mind and a curious nature. It takes a stimulating teacher with the passion and enthusiasm to light the fire of a subject in your mind. It takes the confidence to challenge and be challenged, instead of just accepting the status quo.

We believe everyone deserves an equal opportunity to study. We welcome students from all over the world, who represent diverse experiences, backgrounds and cultures.

For more than 400 years, our students and staff have been influencing and changing the world for the better. Now it's your turn.





1583

The year the University of Edinburgh was opened

11,060

International students from 180 countries

49,065

Students in attendance

Top sporting university

In Scotland, with world-class facilities

28,755

Undergraduate students

30

Libraries

5

Galleries & Museums

200+

Student Societies

Study options

On campus or online?

Whether you study on campus or online, we are committed to providing you with the best learning experience you could hope for.

*Please note: The University uses the terminology 'course', and sometimes 'module', to refer to the individual components that make up our programmes of study.

Online learning

The University of Edinburgh is one of the largest providers of online postgraduate programmes in the Russell Group, and the Royal (Dick) School of Veterinary Studies has been offering innovative online taught postgraduate programmes and courses* since 2005.

The online, part-time format is particularly suited to students already in full- or part-time employment or with other professional or personal commitments, and allows a flexible learning environment that can be adapted to suit individual needs.

We treat the delivery of teaching online as seriously as we do on campus. Every programme has an experienced team of a programme director, coordinator and administrator, and each student is supported by a Student Adviser. Our dedicated e-Learning team ensures our online programmes run smoothly, providing you with the very best learning experience.

Our online learning system is fully interactive and allows you as much access to teaching staff as if you were on campus. You will be part of a thriving community of online students.

Many of our programmes have collaborative relationships with other academic and charitable organisations, allowing you to interact with a wide range of experts in your field.

All our online learning programmes can be taken as intermittent study, enabling you to complete a masters programme in up to six years. You can also select optional courses from other programmes, allowing you to tailor your education and enhance your career opportunities in an increasingly competitive marketplace.

How online learning works at Edinburgh

www.ed.ac.uk/studying/online-learning/postgraduate/how-online-learning-works

The campus experience

Our custom-built Easter Bush Campus, located just outside Edinburgh, features extensive facilities designed to create a collaborative and innovative environment for our students, researchers and clinicians.

Studying in person with us will put you at the heart of our community of staff and students, creating opportunities for collaboration as well as access to world-leading research environments.

Easter Bush benefits from:

- A 300-seat auditorium
- More than 20 rooms for lectures, tutorials and meetings
- State-of-the-art laboratories
- Large and small animal imaging facilities
- Diagnostic facilities
- Facilities for the development of large and small transgenic animals
- Facilities for research on infectious diseases of livestock and small animals
- On-site veterinary hospitals and practices
- Proximity to affiliated organisations including Scotland's Rural College

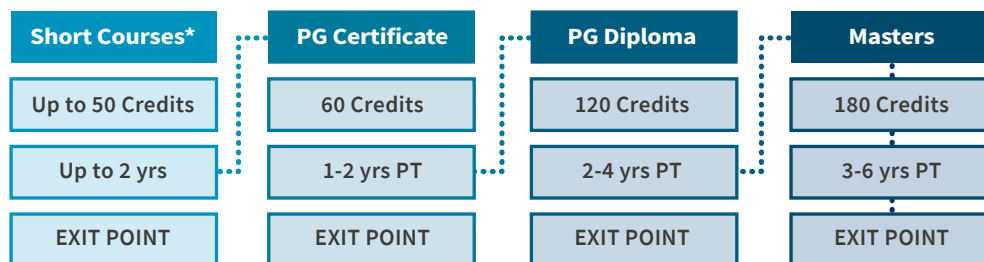
The Campus is located a short journey from the Pentland Hills Regional Park and provides an incredible environment in which to work and study. It has two cafes, a gym and facilities for cycling, walking and running, as well as extensive free parking and electric car charging points.



Discover more

www.ed.ac.uk/vet/postgraduate/online

Postgraduate Taught



*also referred to as the Postgraduate Professional Development (PPD) scheme

Short courses

Postgraduate Professional Development (PPD) is aimed at working professionals who want to advance their knowledge through a postgraduate-level programme, without the time or financial commitment of a full degree qualification.

Courses from within our online taught masters portfolio can be taken as credit-bearing study up to a maximum of 50 credits.

Credits are recognised with a University of Edinburgh postgraduate award of academic credit on completion.

Many students continue to study with us and put credits towards gaining a higher award.

If you choose intermittent PPD study, your tuition fees will be charged on a course-by-course basis.

For further information, see:

www.ed.ac.uk/medicine-vet-medicine/professional-development




Programme Catalogue

Veterinary Clinical



Advanced Clinical Practice

 M VetSci, PG Dip, PG Cert, short courses

 online




Scan the QR code
to find out more.

edin.ac/40WkTzy



Advanced Veterinary Practice

 RCVS Certificate

 online




Scan the QR code
to find out more.

edin.ac/3YyGgbD



Veterinary Anaesthesia and Analgesia

 MSc, PG Dip, PG Cert, short courses

 online



Scan the QR code
to find out more.

edin.ac/2UzqjQ3



Conservation Medicine

 MVetSci, PG Dip, PG Cert, short courses

 online



Scan the QR code
to find out more.

edin.ac/3whPObZ


Programme Catalogue

Behaviour and Welfare



Applied Animal Behaviour and Animal Welfare

 MSc, PG Dip, PG Cert, short courses

 on campus




Scan the QR code
to find out more.

edin.ac/30vbWj2



International Animal Welfare, Ethics and Law

 MSc, PG Dip, PG Cert, short courses

 online




Scan the QR code
to find out more.

edin.ac/2IIQZX5



Clinical Animal Behaviour

 MSc, PG Dip, PG Cert, short courses

 online



Scan the QR code
to find out more.

edin.ac/3k0ArvE



Equine Science

 MSc, PG Dip, PG Cert, short courses

 online

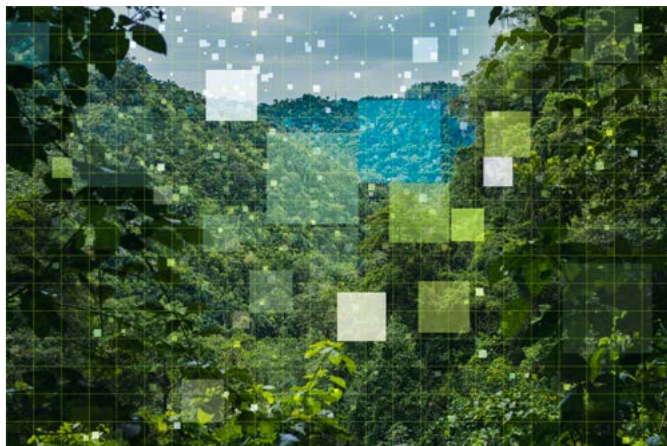


Scan the QR code
to find out more.

edin.ac/2zFgpn9

Programme Catalogue

Interdisciplinary



Data Driven Sustainability

 PG Cert, short courses

 on campus



Scan the QR code
to find out more.

edin.ac/3TMyJ5N



One Health

 MSc, PG Dip, PG Cert, short courses

 online




Scan the QR code
to find out more.

edin.ac/303buJ0



Planetary Health

 MSc, PG Dip, PG Cert, short courses

 online or on campus



Scan the QR code
to find out more.

edin.ac/4h006lp



Sustainable Lands and Cities

 MSc, PG Dip, PG Cert, short courses

 online



Scan the QR code
to find out more.

edin.ac/4e11Cbs

Programme Catalogue

Applied Animal Science



Applied Conservation Genetics with Wildlife Forensics

 MSc, PG Dip, PG Cert, short courses

 on campus




Scan the QR code
to find out more.

edin.ac/2DxeQHH



Applied Poultry Science

 MSc, PG Dip, PG Cert, short courses

 online



Scan the QR code
to find out more.

edin.ac/2M84vc2

Food



Food Safety



MSc, PG Dip, PG Cert, short courses



online



Scan the QR code
to find out more.

edin.ac/2Piztvl



Global Nutrition and Food Security



MSc, PG Dip, PG Cert, short courses



online



Scan the QR code
to find out more.

edin.ac/2NplhPF

Postgraduate Research

We offer MScR and PhD programmes for candidates with a first degree in Veterinary Medicine or Biological or Animal Science.

We may consider degrees in other subjects where they relate closely to the specific area of the project. This can be discussed in advance with the Postgraduate by Research Administration team.

Most of our PhD and MScR places are based at the Roslin Institute, with the remainder based elsewhere in the School. These programmes take place at the Easter Bush Campus and many student projects involve completing research aims throughout the UK and internationally.

Funding and student opportunities are advertised on our website at www.ed.ac.uk/roslin/work-study/postgraduate and at www.findaphd.com

We offer the following subjects as areas for postgraduate research:

- Clinical Veterinary Sciences
- Functional Genetics and Development
- Genetics and Genomics
- Infection and Immunity
- Agriculture and Food Security*

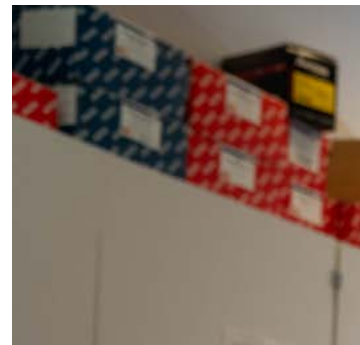
Further information and application links to our PhD and MScR programmes are available on our website at www.vet.ed.ac.uk/education/postgraduate/research

We welcome enquiries about postgraduate opportunities in all areas of our research, and place particular emphasis on:

- Improving the health and welfare of domestic animal species
- Protecting public health
- Alleviating human poverty in low- and middle-income countries
- Infectious disease
- Animal and functional genetics
- Developmental biology
- One Health – animal and human health

Clinical problems integrate closely with fundamental biomolecular studies so you can work on disease problems in each of these areas from the molecular to the animal population level.

This list of research areas offered by the School is not exclusive and informal enquiries are encouraged before applying. The best way to start discussions is to contact the Postgraduate Research Administration team on rdsvs.pgr.admin@ed.ac.uk.



*available as PhD only

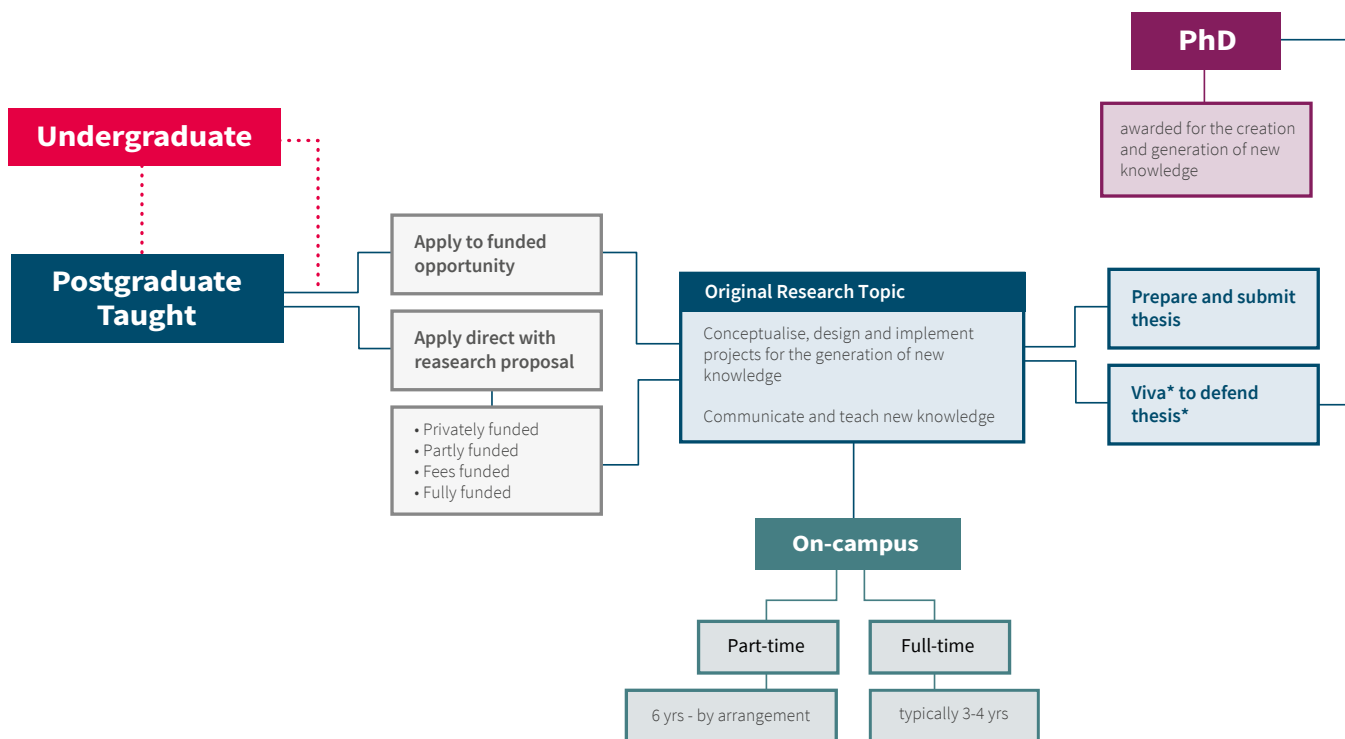


Discover more

www.vet.ed.ac.uk/roslin/work-study/postgraduate

PhD

An illustration of routes towards gaining a PhD.

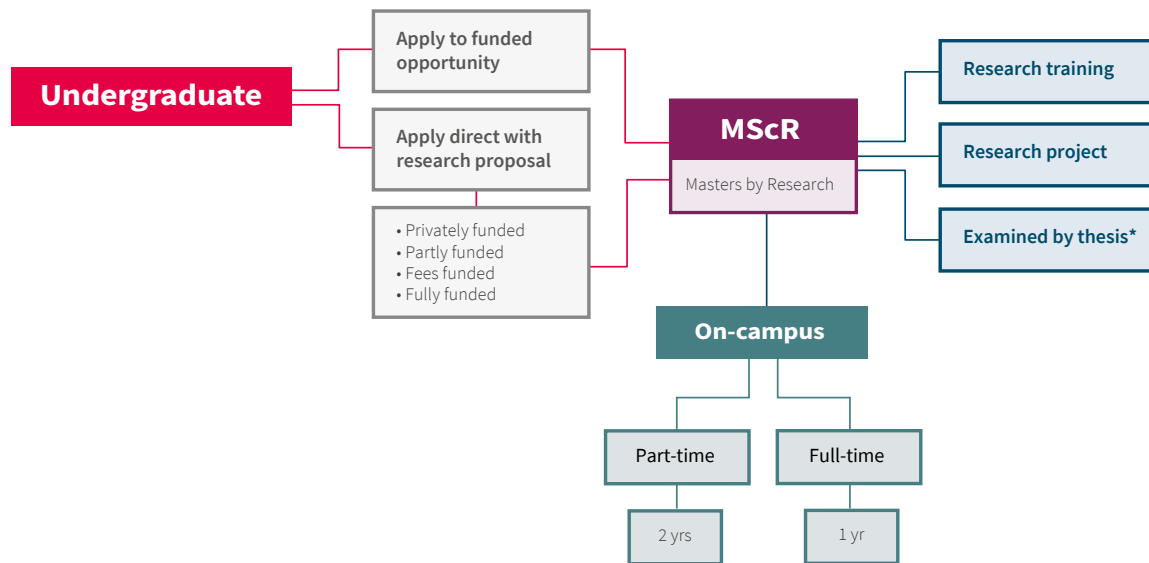


*Viva: "an oral examination"

*Thesis: "a proposition to be discussed, proved, disproved or maintained against scrutiny"

Masters by research

An illustration of routes towards gaining a Masters by Research.



*Thesis: “a proposition to be discussed, proved, disproved or maintained against scrutiny”

Community

We aim to foster a close community of postgraduate students.

Our on-campus students are members of the Easter Bush Postgraduate Student Society, which brings together postgraduate researchers, taught masters students and DVetMed scholars for social and academic activities. If you study on campus as a masters student, you will work closely with your classmates through tutorials, lectures and seminars, becoming part of a close-knit group over the duration of your studies.

However, distance is no barrier if you choose to study online. Our online learning postgraduates are a diverse group of students from all over the world, united by their academic interests. Using interactive learning environments, our online students and tutors maintain a supportive virtual community that ensures you get the best from your studies.

We encourage our research students to interact and get to know each other through a series of induction activities in the School and through the postgraduate society. There is a wide range of seminar series, and team building and development exercises are available through the Institute for Academic Development. You are encouraged to interact with the wider University postgraduate community through cross-school networks such as Edinburgh Infectious Diseases, Edinburgh Neuroscience and the Edinburgh Immunology

Group, and by participating in the University-wide Three Minute Thesis competition. You are also encouraged to take part in public engagement events organised by the Roslin Institute and the School, and to actively communicate your science outside the University.

Networking spaces are vital in the fostering of a strong community, and we are fortunate within the School to have excellent communal spaces for this purpose at the Easter Bush Campus.

Joining professional societies can also be beneficial to your postgraduate training and allows you membership of a wider academic community. In many cases societies offer travel grants for students, and membership usually entitles reduced or waived registration fees to society meetings.

You will also have access to all the support services available across the wider University, including the Careers Service, International Recruitment Team, Edinburgh University Students' Association, the independent Advice Place and the Student Counselling Service.





How to apply

Taught Programmes

We have an online application process for all postgraduate programmes. It's a straightforward system with full instructions, including details of supporting documentation you need to submit.

When applying, you will set up an account which will allow you to save your application should you wish to submit it at another time. Full guidance on our application system is available at: www.ed.ac.uk/postgraduate/applying

Research Programmes

Prospective students should follow the apply links online to submit an application or email the Postgraduate Research Administration team on rdsvs.pgr.admin@ed.ac.uk for the attention of who you wish to be supervised by. If you are unsure, you should contact rdsvs.pgr.admin@ed.ac.uk in the first instance.

All prospective students will be required to interview either in person or remotely.

General requirements

Our usual minimum entrance requirement for postgraduate study is a UK undergraduate 2:1 honours degree or its international equivalent, (see www.ed.ac.uk/international/graduate-entry) in a subject related to your chosen programme or research topic. You will also need to meet the University's language requirements (see right).

Entry requirements for individual programmes can vary, so check the details for the specific programme you wish to apply for.

References

For general guidance on references, visit:
www.ed.ac.uk/postgraduate/references

Taught Programmes – the normal requirement is one reference, although an additional reference may be requested.

Research Programmes – two references are required.

Deadlines

Programmes that attract especially high competition for places may close earlier. It is not always possible for us to identify in advance which these are likely to be for an upcoming application cycle. Please check online for the most up-to-date details.

On-Campus Taught Programmes – late July. This is to allow time for students to prepare to commence studies and relocate if required. It also stabilises the final student numbers so we can allocate the appropriate teaching spaces and support resource before teaching starts.

Online Taught Programmes – the deadline for online learning programmes is usually late August but can vary from programme to programme.

Research Programmes – for many research programmes, there are multiple entry points – check with the Postgraduate Research Administration team for further information on start dates.

College studentships that start in the autumn are usually advertised in October/November the previous year with a closing date in December/January.

English language requirements

You must demonstrate a level of English language competency that will enable you to succeed in your studies, regardless of your nationality or country of residence.

English language requirements can be affected by government policy, so please ensure you visit our degree finder to check the latest requirements for your programme.

Fees and funding

Fees

Tuition fees vary depending on the nature of your studies; for example, full or part-time study, online or on-campus, intermittent or continuous study can all affect what you will pay.

You can view the latest tuition fees by programme at:
www.ed.ac.uk/tuition-fees

Fee payments can be made as a lump sum, or the cost can be spread over a longer period of time.

Fully funded PhD studentships from the School are released throughout the year and can be found on
www.findaphd.com.

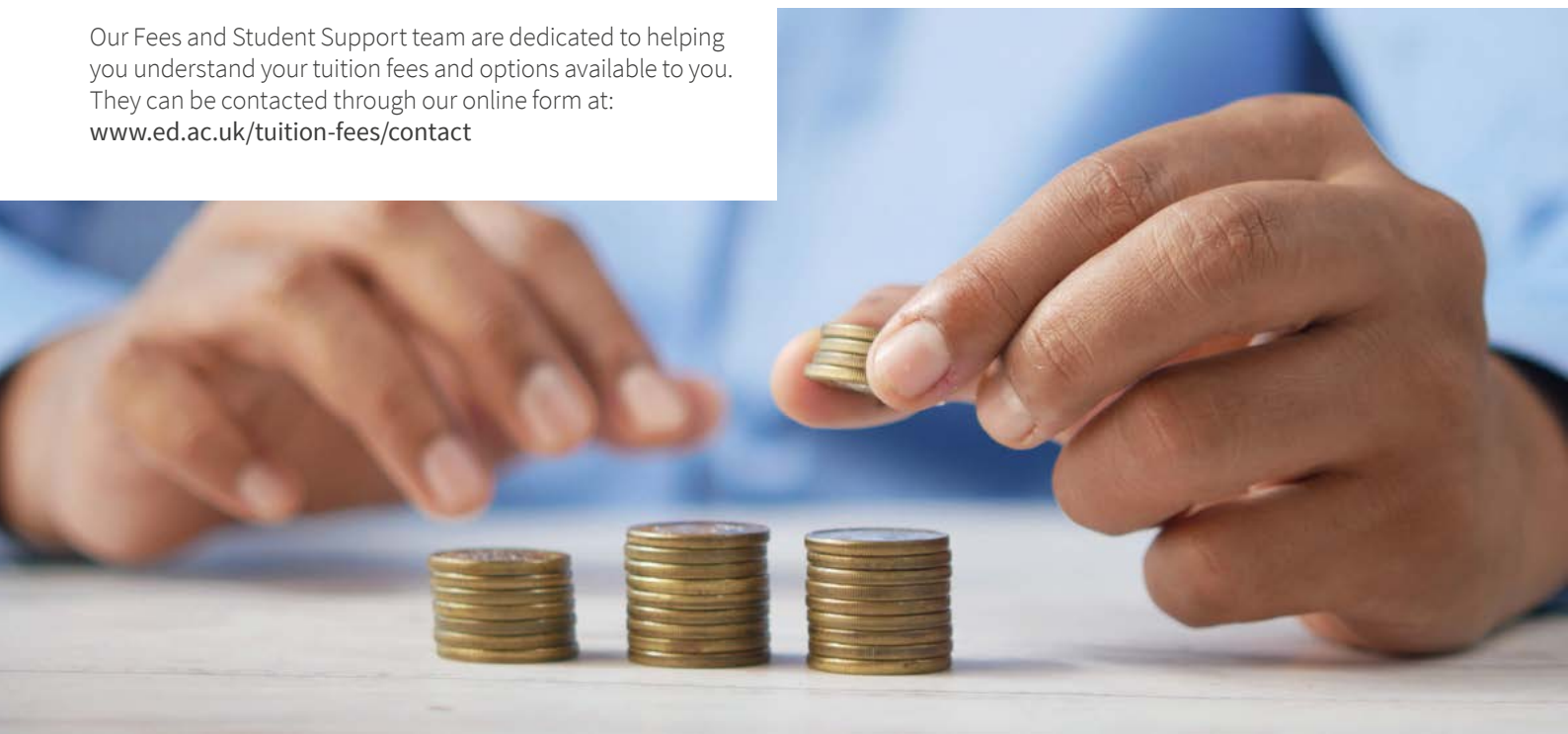
Our Fees and Student Support team are dedicated to helping you understand your tuition fees and options available to you. They can be contacted through our online form at:
www.ed.ac.uk/tuition-fees/contact

Funding

A large number of scholarships, loans and other funding schemes are available for your postgraduate studies.

Funding opportunities can change throughout the year and the most up-to-date information can be found at:
www.ed.ac.uk/student-funding/postgraduate

The University of Edinburgh subscribes to the Alternative Guide to Postgraduate Funding, which is a database specifically for those looking for funding to support postgraduate studies. For more information, please visit:
www.ed.ac.uk/student-funding/postgraduate/the-alternative-guide-to-postgraduate-funding



Support and development

The University is here to support you in the successful completion of your postgraduate training and to prepare you for your career. We provide information and advice on how to plan your career and develop the skills you will need now and in the future.

Throughout your postgraduate studies we support you with advice and training on effective study, exams and assignments, numeracy and data analysis, specific postgraduate writing skills and finding and using academic sources. We offer learning opportunities to develop your information and IT skills, for personal development and to help you work, study and research more effectively. We run a series of workshops for postgraduate taught students, titled Masters Study Skills: Critical Reading, Essay Planning and Writing. Our research students can develop their planning skills, professional development, communication and IT skills through a wide range of courses developed specifically with the medical and veterinary medicine sectors in mind.

Institute for Academic Development

All postgraduate students can benefit from our Institute for Academic Development (IAD), which provides information, events and courses to develop the skills you will need throughout your studies and in the future. IAD events also offer the perfect opportunity to meet and network with other postgraduates from across the University.

www.ed.ac.uk/iad/postgraduates

Careers Service

Our Careers Service plays an essential part in your wider student experience at the University, offering a range of tailored careers and personal development guidance and support. We support you to recognise the wealth of possibilities ahead, while at university and after graduation, helping you explore new avenues, tap into your talents and build your employability with confidence and enthusiasm.

www.ed.ac.uk/careers/postgrad

Open to new ideas

We boast one of the most entrepreneurial student bodies in the UK and have helped students launch nearly 100 startups in the last two years. One in five of those startups was a social enterprise.

Edinburgh Innovations, the University's commercialisation service, offers free support to student entrepreneurs including one-to-one business advice and a range of workshops, bootcamps, competitions and networking events.

www.ed.ac.uk/edinburgh-innovations/for-students



THE UNIVERSITY *of* EDINBURGH
The Royal (Dick) School
of Veterinary Studies

The Royal (Dick) School of Veterinary Studies

The University of Edinburgh
Easter Bush Campus
Midlothian EH25 9RG

www.ed.ac.uk/vet

This publication contains information for students planning to start university in 2025. We have made every effort to ensure all details are correct at the time of going to press (October 2024). However, since this information is subject to change, please check the University's website for the latest updates: www.ed.ac.uk

The University of Edinburgh is a charitable body, registered in Scotland, with registration number SC005336.

EDINBURGH
extraordinary futures await