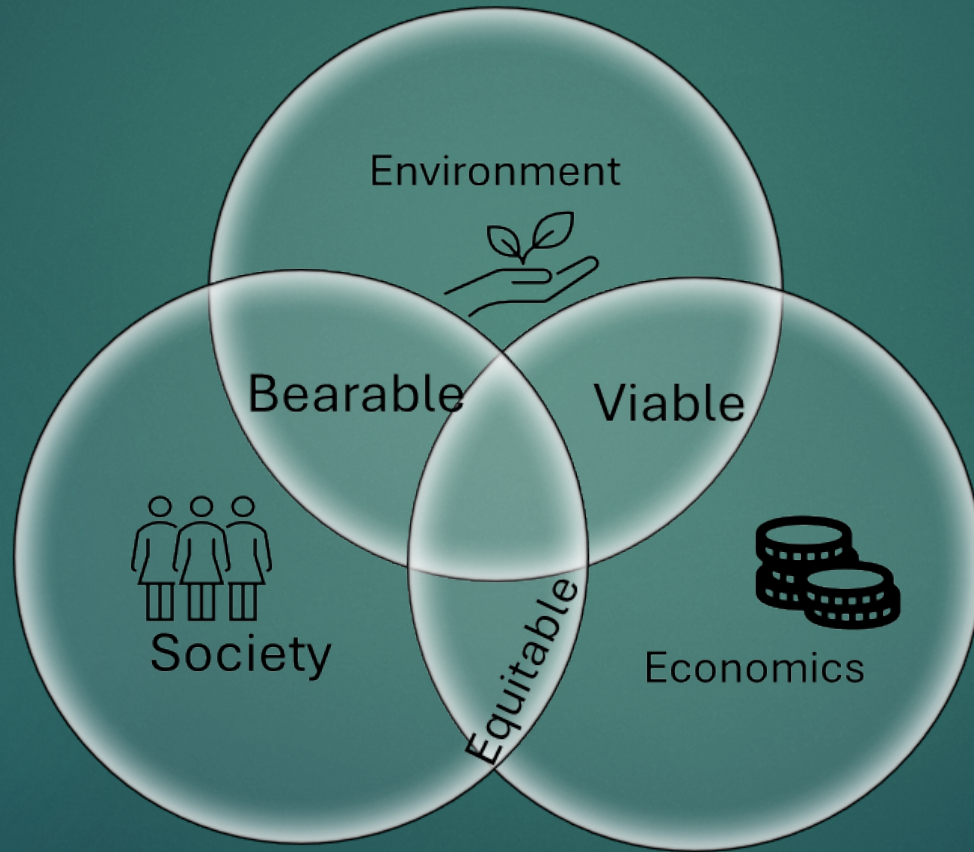


A Blue Economy view on Salmon Farming Priorities for Fish Health Research



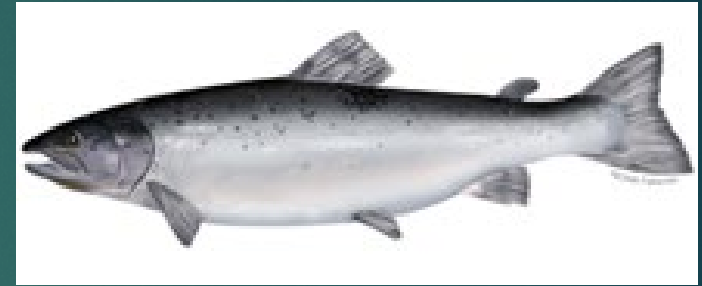
Marine Directorate

- ▶ What is the Marine Directorate?
 - ▶ SG Directorate responsible for integrated management of Scotland's seas
 - ▶ Marine Environment, Marine Economy & Communities, Corporate, Operations and SEDD
- ▶ Science Evidence Data and Digital SEDD
 - ▶ Science and analysis in support of MD functions
 - ▶ Renewables and ecology
 - ▶ Marine fisheries
 - ▶ Climate change, biodiversity and ecosystems
 - ▶ Marine Analytical Unit

Science linked to Aquaculture

- ▶ Aquaculture, Fish Health and Biosecurity

- ▶ Fish Health Inspectors
- ▶ Diagnostics
- ▶ Biosecurity
- ▶ Aquarium



- ▶ Salmon and Freshwater Fisheries

- ▶ Salmon ecology and monitoring
- ▶ Aquaculture Interactions with wild fish
- ▶ Aquaculture Official Statistics

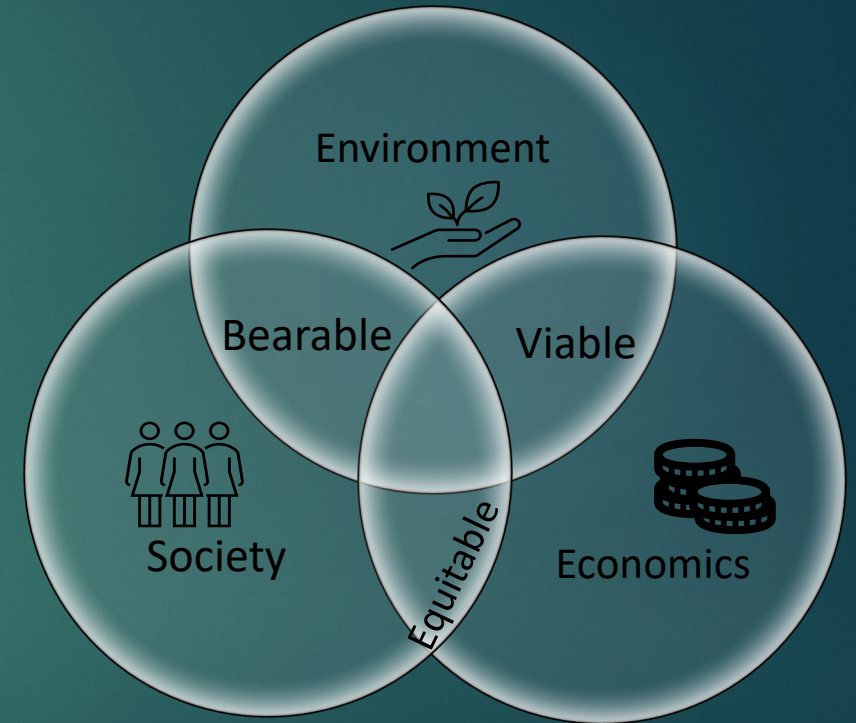


- ▶ Many other areas

- ▶ HAB, Oceanography, offshore wind farms data

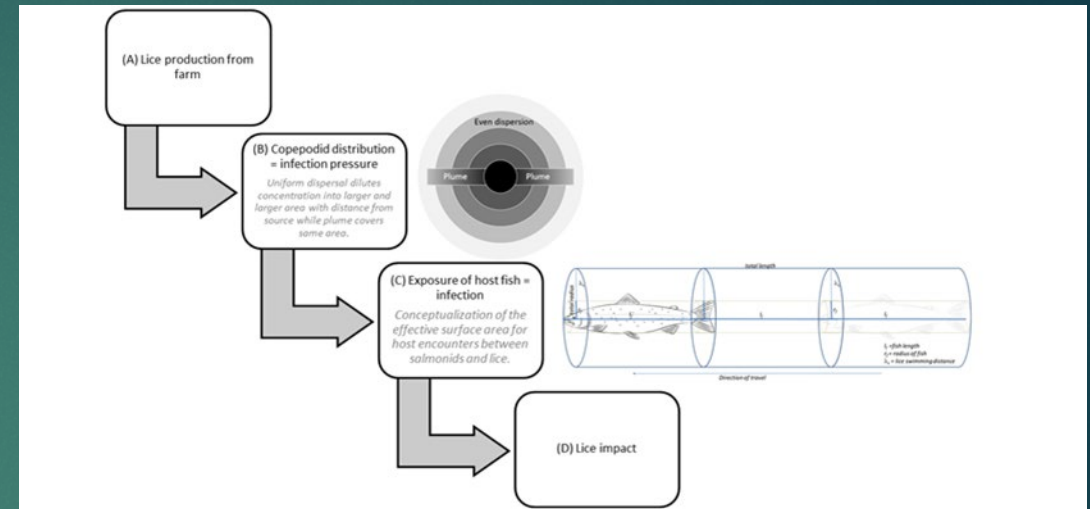
Policy and Legal Drivers

- ▶ Control of Notifiable and Emerging Diseases
 - ▶ Disease of Fish Act 1937
 - ▶ Aquatic Animal Health (Scotland) Regulations 2009
 - ▶ Farmed Fish Health Framework 2018
 - ▶ Mortality, climate change and treatment
 - ▶ Scottish Wild Salmon Strategy 2020
 - ▶ Blue Economy 2020
 - ▶ Sea Lice Risk Assessment Framework 2024
-
- ▶ Rural Affairs and Islands Committee of the Scottish Parliament
 - ▶ Follow up report 2025

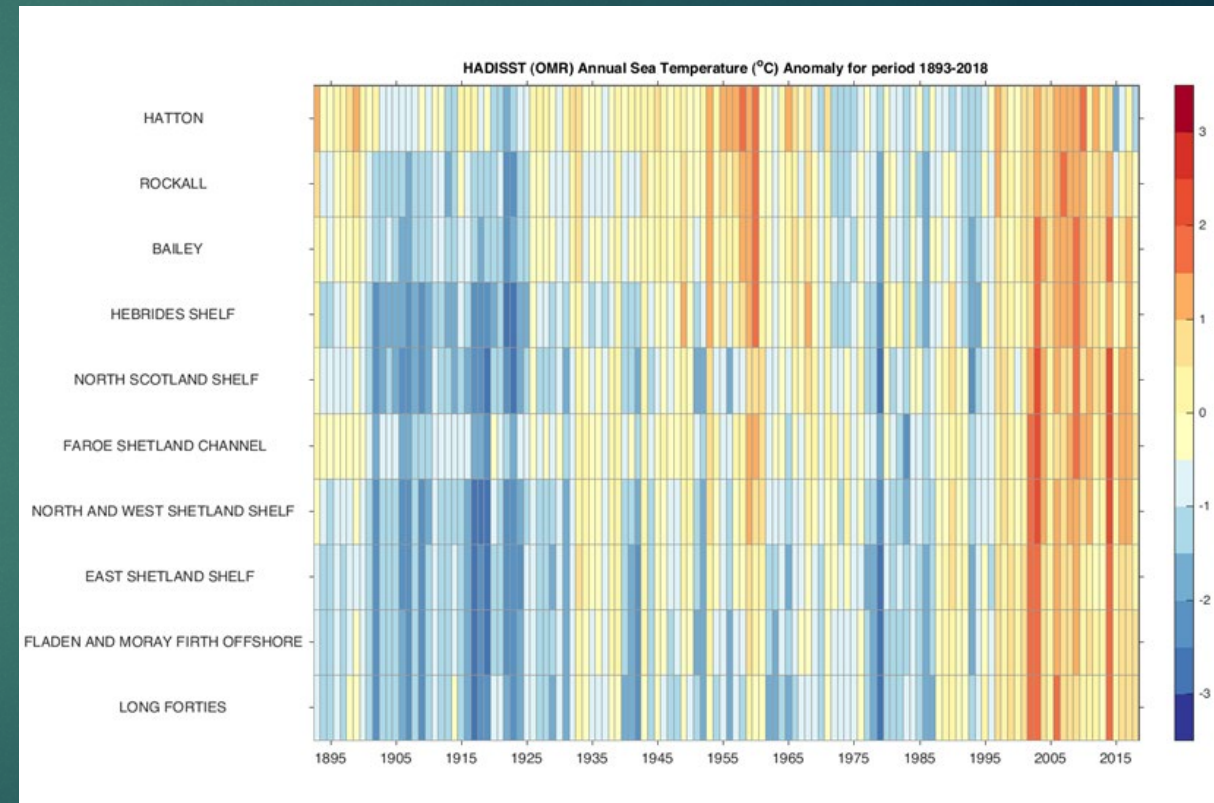
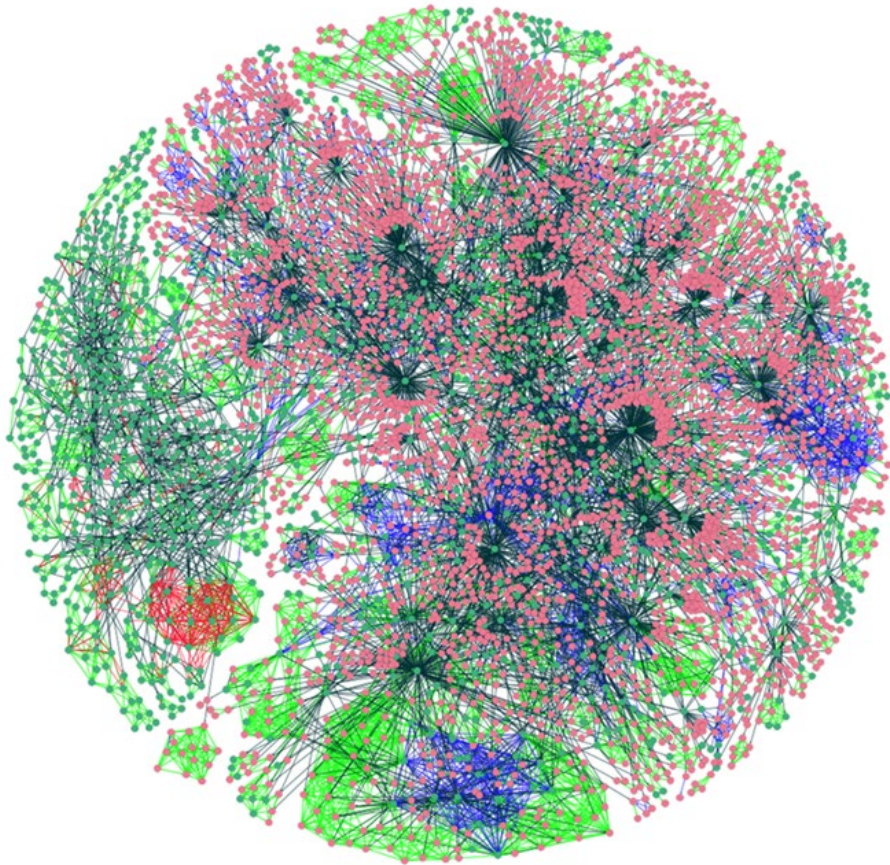


Examples of science to address drivers

- ▶ Emergence and spread of disease
- ▶ Reduction of mortality
- ▶ Sea lice
- ▶ Cleaner fish
- ▶ Data and data presentation
- ▶ Climate change and diseases
- ▶ Harmful Algal Blooms

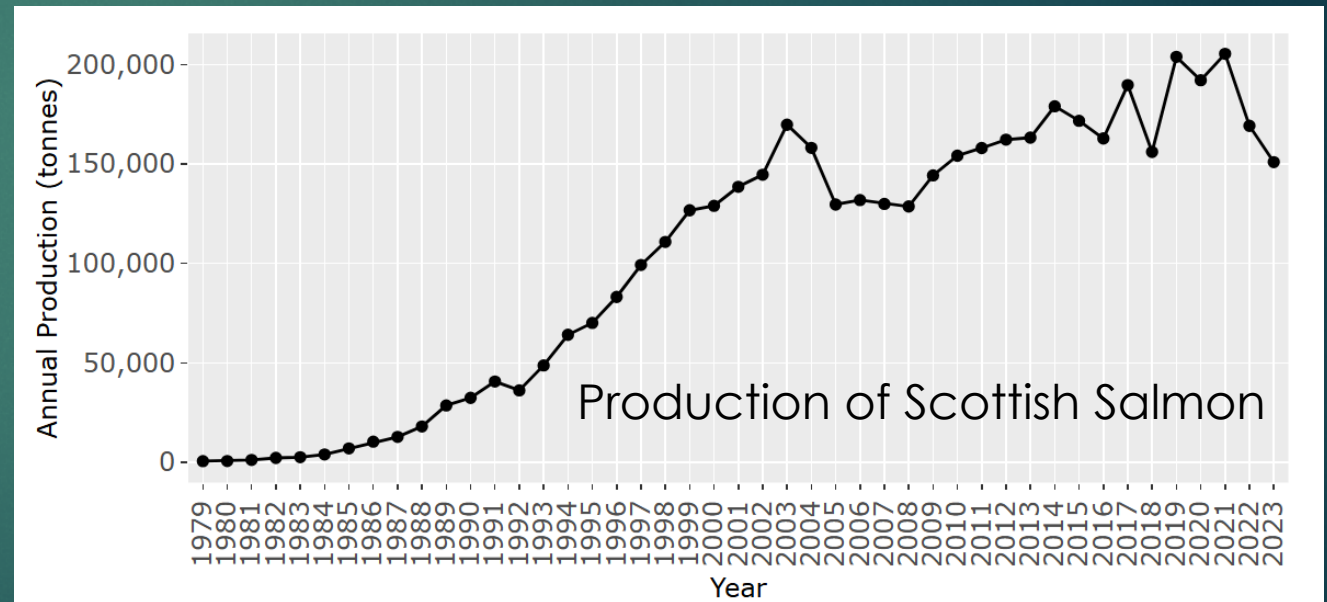


Reducing Disease Spread and Impacts in Aquaculture in a complex and changing environment



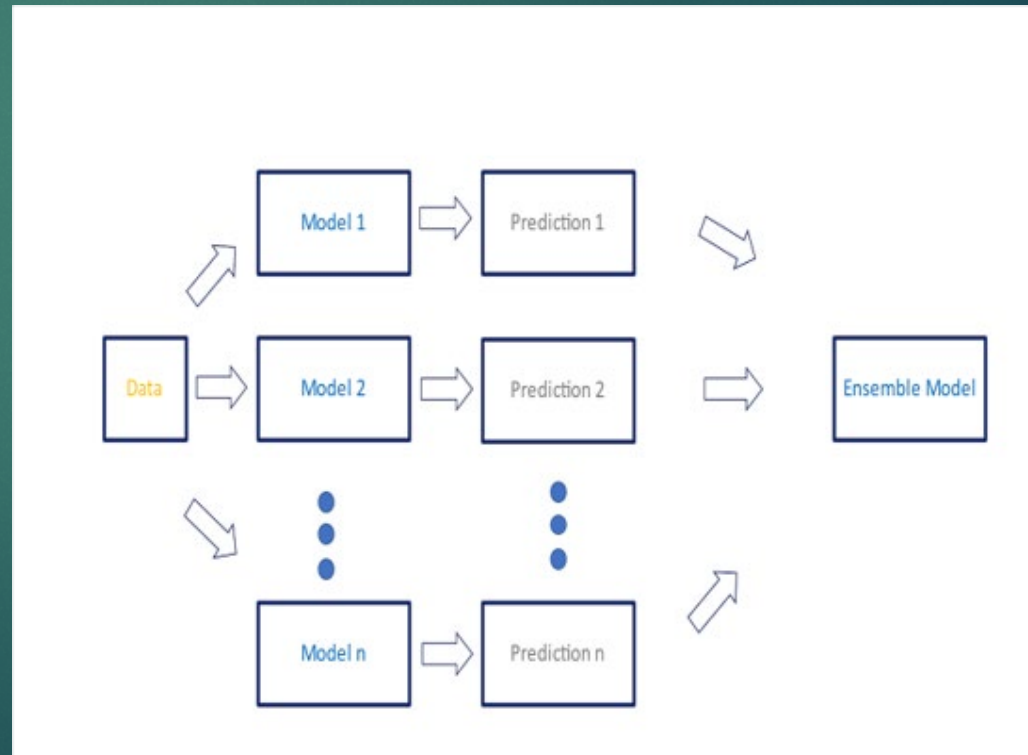
Resources

- ▶ Data
 - ▶ Data sets such as Scotland's Aquaculture Website
 - ▶ FHI reports
 - ▶ Fieldwork data
 - ▶ Network data
 - ▶ Official Statistics
- ▶ Aquaria and Labs
- ▶ Vessels
- ▶ Links to government policy
 - ▶ Application



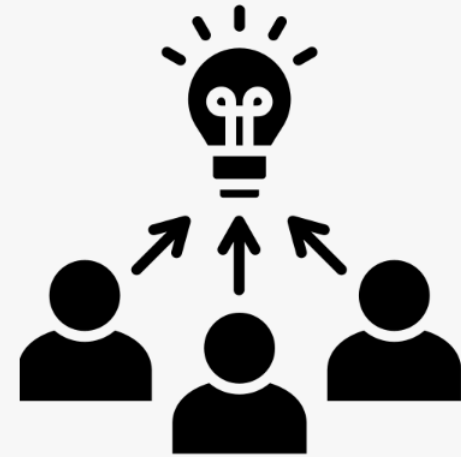
Models of collaborative approach

- ▶ Salmon Parasites in Linnhe Lorne and Shuna (SPILLS)
- ▶ Salmon Aquaculture Validate for Ecotoparasite Dispersal (SAVED)
- ▶ Gap Analysis
- ▶ Work with partners:
 - ▶ Industry
 - ▶ Academic
 - ▶ FMS



Areas of Research Interest

- ▶ The Marine Directorate is preparing an Areas of Research Interest Report
- ▶ Chief Scientist Marine Mark Inall
- ▶ Report still in development
- ▶ Consultations on Marine and on Freshwater ARI
- ▶ In development



Conclusion

- ▶ SG supports sustainable aquaculture growth in a Blue Economy
 - ▶ Optimizing balance of stakeholder interests
- ▶ **This requires informed policy**
- ▶ SEDD provides scientific advice
 - ▶ Own work
 - ▶ Collaborations
 - ▶ Commissioned reviews
- ▶ Networking is critical

