

# Newsletter

# November 2024

As the nights draw in it's time to think about autumn issues. This month Rachel reminds us about factors impacting rates of pneumonia cases and mentions some subsidised testing options. We have an upcoming meeting for those needing boxes ticked for accreditation schemes so look forward to seeing many of you there later this month.

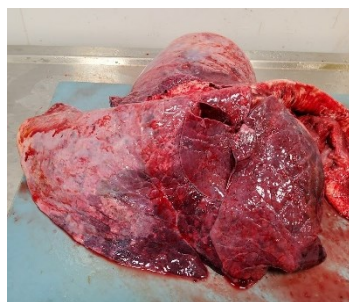
## Pneumonia at Housing

That time of year again...

We all know housing cattle, especially calves = increased pneumonia risk – but why? There are a number of factors playing into pneumonia development and these tend to culminate at the point of housing. So, what are they and how can we mitigate some of the risk?

**Housing itself** – Mixing of ages, sharing of airspace with multiple ages, stress of new surroundings and groups, enclosed environment with less-than-ideal ventilation to move the air through. Can you assess the housing the animals are going into – how is the air movement when fully stocked, in flow and outflow of air is key to drive air movement up and away from over the animals' backs.

**Weaning** – for some the ideal time to do this is at housing, preventing having to handle animals twice but the stress of weaning on top of housing stresses can be a factor we want to avoid wherever possible. Think about how you can limit stress through slow weaning processes or having the animals in and



settled for a couple of weeks before weaning may also help.

**Vaccination** – No vaccine provides immediate protection. They all rely on a response by the immune system to create a memory if the animal is exposed again and the immune system doesn't respond as well if it is already stressed. The quickest vaccine (generally intranasal vaccines) still takes 7 days to provide some protection. Therefore, getting vaccine in before the

period of exposure and before any undue stress on the animal is key to using them to their full potential.

**Pathogens on farm** – Do you know what bugs you have floating round on farm? Generally speaking, the respiratory viruses include Bovine Respiratory Syncytial Virus (BRSV), Para-Influenza 3 (PI3), Infectious Bovine Rhinotracheitis (IBR) these can cause disease in their own right or cause a lowered defence and damage to the lungs that lets secondary bacteria in to cause damage on top. Most of the bacteria found in pneumonia cases are commensal bacteria found in the respiratory tract of most healthy animals however given the right conditions and the chance they can multiply and cause their own pathology, with a few bacteria being invasive and not normally present eg *Mycoplasma Bovis*.

It can be argued that it doesn't matter so much what you have on farm for the general management and prevention of pneumonia we would still be recommending limiting stress around housing, maximising calf protection from



the dam through colostrum at birth and good ventilation when housed. But there can be a use in targeting your vaccine schedule to help with these preventative measures.

Blood sampling unvaccinated calves post exposure can give us an idea of what is on farm and what the

calves have been exposed to. By doing this it can help inform your decisions. There are normally a couple of schemes run by various drug companies each year at a subsidised rate so if you are interested in investigating pneumonia levels on farm further, **please give us a call to discuss what would be best for you and when.**

Colleagues of ours at the Global Academy of Agriculture and Food Systems, also on campus, are running a survey and have asked us to share it with our clients.

## Are you a British Livestock Farmer? We want to hear from you

We are investigating the challenges faced by farmers, and the impacts of these challenges on your wellbeing, your animals and the environment.

Please take 10 minutes to complete this anonymous survey to help us understand how we can best support British farmers, and British farming.



THE UNIVERSITY OF EDINBURGH  
Global Academy of  
Agriculture and Food Systems



Please scan  
the QR code  
for more  
info & to  
complete  
the survey



## Practice Meeting

We've had a few requests to run a Medicine use course again, last done a few years ago. Details of the upcoming course below.

## Responsible Use Of Medicines Training Red Tractor Approved Course

This session will cover all of the requirements to meet the Red Tractor Farm Assurance standard whereby every farm must have one member of staff who has attended an approved training course.

Any member of staff from our farms is welcome to attend and is not limited to one per farm. All species will be covered during the talk.

Even if you are not Red Tractor Accredited the training will meet potential future requirements of other schemes such as QMS.

Lunch and refreshments will be provided.

Cost of £20 per person

A certificate of training will be issued after the talk

Date: Wednesday 27th November 2024

Time: 1.30pm for lunch, talk starting at 2.30pm start

Venue: Langhill Farm, Roslin, EH25 9ST

PLEASE CONTACT THE PRACTICE TO CONFIRM YOUR PLACE BY 20<sup>th</sup> November 2024

0131 445 4468