

Hospital for Small Animals

Interventional Radiology Service



THE UNIVERSITY of EDINBURGH
The Royal (Dick) School
of Veterinary Studies

Welcome to the Interventional Radiology Service

'Interventional radiology' is the term used to describe procedures that are guided using advanced imaging techniques (typically fluoroscopy (video radiography) and endoscopy) to perform minimally invasive operations. These procedures can remove the need for major surgery; animals can recover more quickly, are more comfortable and have fewer complications.

Interventional radiology has allowed us to develop new approaches to previously untreatable conditions and has greatly expanded the range of treatments we can offer.

The Interventional Radiology Service is led by specialists in Surgery, Internal Medicine, Cardiology, Diagnostic Imaging and Anaesthesia, all with advanced training in this area and all committed to providing excellent care.

- Minimal trauma
- Advanced techniques
- Fast recovery



Interventional Radiology Service

We can use these techniques to treat a huge range of conditions, a list of commonly treated conditions are listed below but many others are on offer.

Urinary

- Urethral stenting for lower urinary tract obstructions
- Ureteral stenting for ureteral strictures, stones, or obstructive bladder tumours
- Laser ablation of ectopic ureters

Cardiac

- Closure of patent ductus arteriosus
- Balloon valvuloplasty for pulmonic stenosis
- Ablation for cardiac arrhythmias
- Pacemaker implantation

Vascular

- Transjugular coil embolization for intrahepatic portosystemic shunts

Respiratory

- Tracheal stenting for tracheal collapse
- Nasopharyngeal ballooning and stenting for nasopharyngeal stenosis

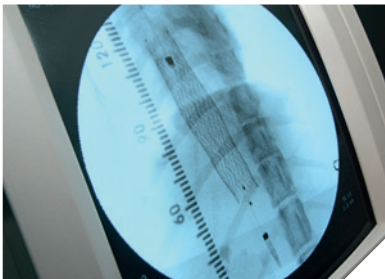
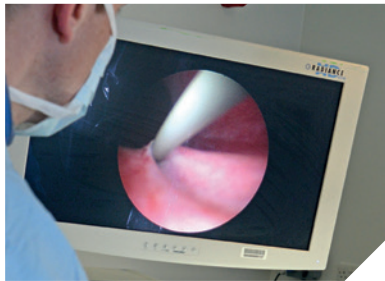
Gastrointestinal

- Oesophageal and colonic ballooning and stenting for stricture or obstructive tumours

The Interventional Radiology service at the Royal (Dick) School of Veterinary Studies boasts a wealth of experience in interventional techniques. The first ever interventional cardiac procedures in Europe were performed here. Our multi-disciplinary team of specialists ensure we can perform these techniques year round and give optimal care 24 hours a day.

We make full use of our advanced imaging modalities and specialised equipment on site including:

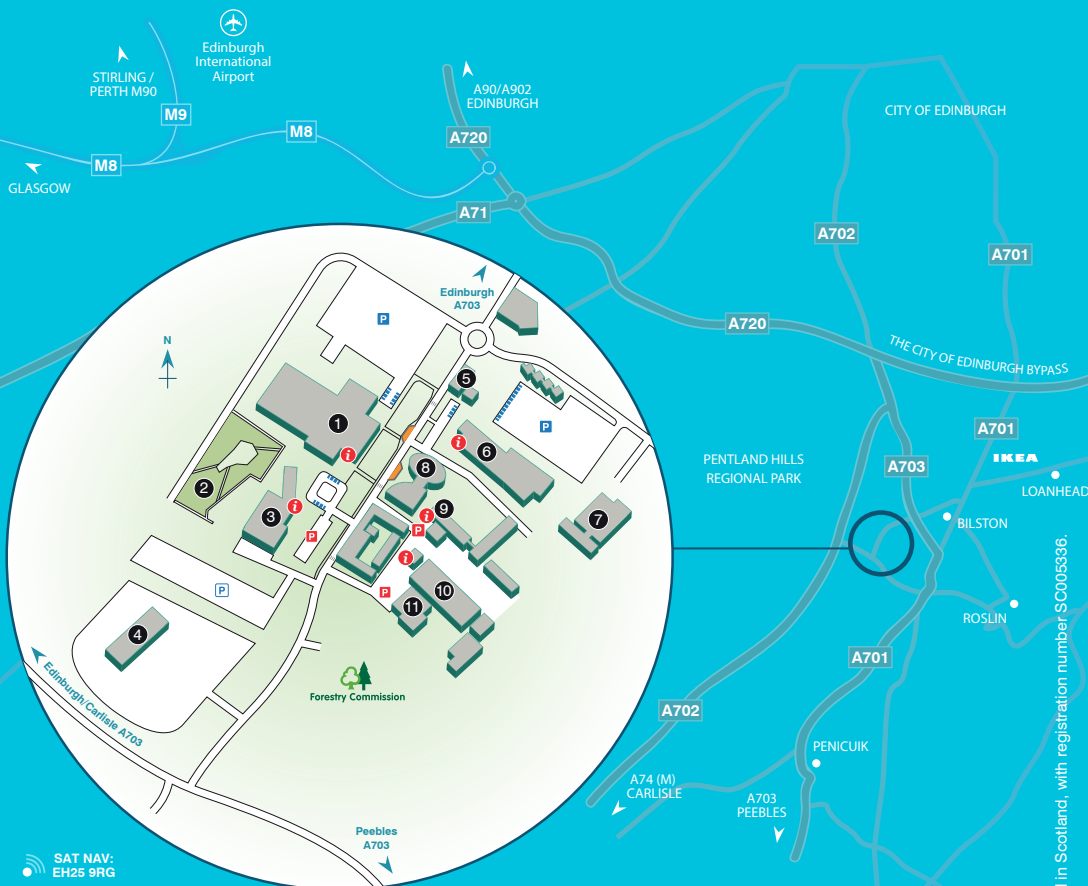
- 64 slice CT scanner
- MRI
- High definition endoscopy
- C-arm fluoroscopy
- Digital radiography with digital subtraction
- Holmium: YAG Surgical Laser System



The Interventional Radiology Service

The Royal (Dick) School of Veterinary Studies
The University of Edinburgh
Easter Bush Campus
Midlothian EH25 9RG

telephone 0131 650 7650
fax 0131 650 7652
email HfSAreception@ed.ac.uk
www.ed.ac.uk/vet/ir



1. Veterinary Teaching Building
2. Community Garden
3. The Hospital for Small Animals and Riddell-Swan Veterinary Cancer Centre
4. The Bumstead Building
5. Campus Service Centre

6. The Roslin Institute
7. The Greenwood Building
8. Campus Hub and Roslin Innovation Centre
9. Farm Animal Practice
10. Equine Hospital and Practice
11. Farm Animal Hospital

- P** Overflow parking
- 100%** Disabled parking
- i** Main entrance & reception
- Bus stop**
- P** Client parking
- P** Parking

The Power of Three: The unique offering of Excellence in Clinical, Teaching and Research make up the three pillars of The Royal (Dick) School of Veterinary Studies.

As part of The University of Edinburgh, the Hospital for Small Animals is a not-for-profit organisation.