

Equine Veterinary Services

Equine Medicine Service



THE UNIVERSITY of EDINBURGH
The Royal (Dick) School
of Veterinary Studies

Welcome to the Equine Medicine Service at the Dick Vet

Equine Medicine at the Dick Vet has a worldwide reputation for clinical excellence and for furthering the health and welfare of the horse. We are a referral service with RCVS and European Recognised Veterinary Specialists in Equine Medicine supported by junior veterinary surgeons (residents) that are training to achieve specialist status.

We provide a professional, prompt service to both the referring vet and the client and pride ourselves on good communication, animal welfare and prioritising quality of life for our patients.

We have a strong team based approach to all our cases, collaborating closely with colleagues in equine surgery and the farm and small animal sections. We can therefore also offer access to other specialist services such as dermatology, in collaboration with our colleagues in the Hospital for Small Animals.

Why refer to the Dick Vet Equine Medicine team?

- Dedicated service run by RCVS and European Recognised Specialists in Equine Medicine
- Extensive experience in assessing complex and unusual cases
- Facilities and diagnostic equipment that are amongst the very best
- Patient centred approach to diagnosis and treatment
- Prompt and effective communication with owners and vets
- Prompt referral and a flexible appointment schedule
- 24 hour in-patient care, with a dedicated Critical Care Unit
- Excellent hospital support staff with full on-site clinical pathology and microbiology service

Equine Medicine investigates and treats over 300 horses per year that present for a variety of problems including:

- Colic
- Coughing and nasal discharge
- Heart murmurs and arrhythmias
- Poor performance
- Weight Loss
- Dullness and pyrexia of unknown origin
- Neurological diseases
- Collapse
- Chronic laminitis including hormonal abnormalities
- Acute and chronic eye pain and discharge

Our impressive range of equipment includes

- Video-endoscopy for viewing stomachs, bladders and airways
- Standing CT for evaluation of the head and neck
- Sophisticated ultrasonography for viewing the abdomen, chest and other soft tissues
- Dedicated CCTV monitoring box

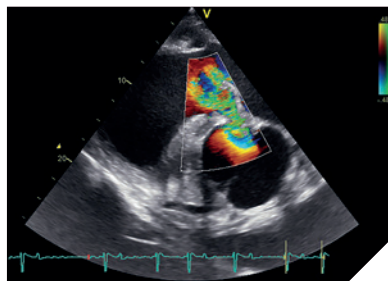
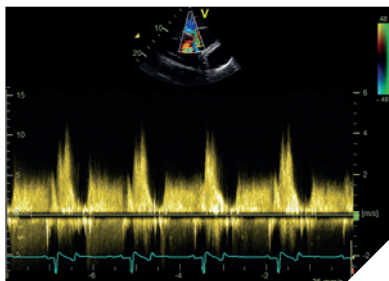
Cardiology

Cardiology is one of the key strengths of the R(D)SVS Equine Hospital, with a wealth of experience built up over many years.

Drs Karen Blissitt and John Keen examine over 50 new cardiology cases per year primarily to investigate murmurs detected at pre-purchase or other routine examinations and for evaluation of rhythm abnormalities. The cardiology service works alongside its colleagues in orthopaedics, neurology and respiratory medicine to investigate cases of poor performance and collapse.

Diagnostic techniques and procedures:

- **Sophisticated Two-dimensional and Doppler echocardiography** for assessing heart size and function, severity and prognosis of leaky valves, and congenital heart problems
- **3 Dimensional echocardiography (3DE)** We are the only equine hospital in the UK regularly using 3DE to assess horses' hearts, and this forms part of our ongoing clinical research investigations into improving means of assessing and monitoring cardiac disease in horses and ponies
- **Standard, telemetric, exercising and 24 hour electrocardiography (ECG)** to evaluate for abnormal heart rhythms at rest or at exercise
- **Trans-venous Electro Conversion (TVEC)** We are one of only 2 centres in the UK offering this technically challenging technique which involves placing special catheters into the heart to facilitate conversion of atrial fibrillation to sinus rhythm



“

Can't thank all the wonderful staff at the Dick Vet enough after they saved my horse's life. My ex-racehorse Nico presented with a serious heart condition and now he is doing extremely well and thoroughly enjoying his retirement.

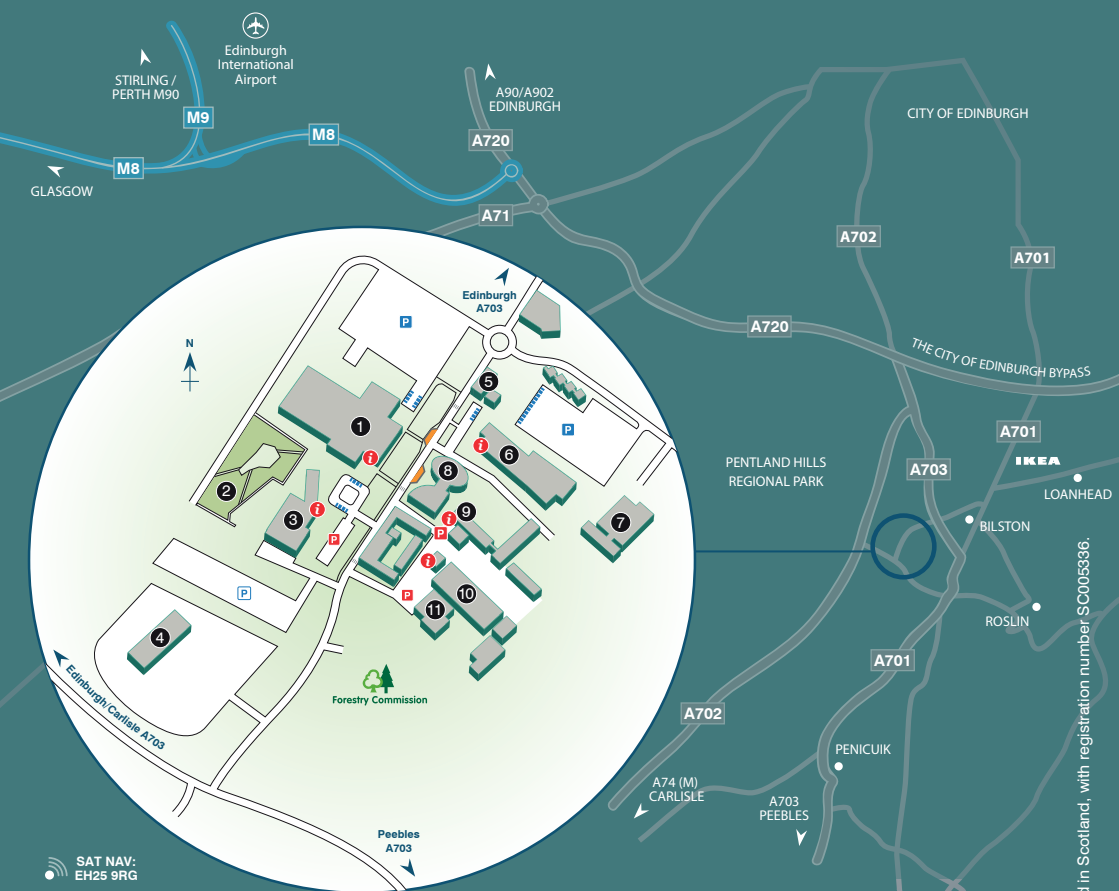
”



Equine Medicine Service

The Royal (Dick) School of Veterinary Studies
The University of Edinburgh
Easter Bush Campus
Midlothian EH25 9RG

telephone 0131 650 6253
fax 0131 650 8824
email EQH@ed.ac.uk
www.DickVetEquine.com



1. Veterinary Teaching Building
2. Community Garden
3. The Hospital for Small Animals and Riddell-Swan Veterinary Cancer Centre
4. The Burnstead Building
5. Campus Service Centre

6. The Roslin Institute
7. The Greenwood Building
8. Campus Hub and Roslin Innovation Centre
9. Farm Animal Practice
10. **Equine Hospital and Practice**
11. Farm Animal Hospital

- Overflow parking
- Disabled parking
- Main entrance & reception
- Bus stop
- Client parking
- Parking

The Power of Three: The unique offering of Excellence in Clinical, Teaching and Research make up the three pillars of The Royal (Dick) School of Veterinary Studies.

As part of The University of Edinburgh, the Dick Vet Equine Hospital is a not-for-profit organisation.