



THE UNIVERSITY *of* EDINBURGH
The Royal (Dick) School
of Veterinary Studies

Welcome

BVM&S Webinar Series

Accommodation and Visa & Immigration

16 April 2024 / 15:00 BST

EDINBURGH
xtraordinary futures await

Recording



This session will be recorded

Any information that you provide during this session is optional and in doing so you give us consent to process this information.



Who can view the recording?

We will record this event so that those who are not able to join us are able to access the information shared during this event at a more convenient time.

Recordings will be stored by the University of Edinburgh for one year and may be published on our website during this time.



What to Expect



Accommodation

Michelle Tait

Allocations Administrator



Visas/ Immigration

Jane O'Loughlin

International Student Support Officer



Questions?

Submit via Q&A at any time

Questions will either be answered in the chat or on camera





THE UNIVERSITY *of* EDINBURGH

Welcome

Accommodation Options for Undergraduate Students



THE UNIVERSITY *of* EDINBURGH
Accommodation, Catering and Events



THE UNIVERSITY
of EDINBURGH

Application process



Offer to study from UoE



Apply via MyEd
www.myed.ed.ac.uk



Unconditional status



Email offer



Accept

www.ed.ac.uk

   [applyedinburgh](#)



THE UNIVERSITY
of EDINBURGH

Accommodation guarantee

Welcome



Edinburgh is your first choice



You apply by 31 July



You are Unconditional Firm by 30th
August



You live outside the City of Edinburgh



You are coming for the full year



THE UNIVERSITY
of EDINBURGH

What are my options?

Welcome



Catered or self-catered



En-suite or shared bathroom



Modern or traditional



Studio



Room size



Single gender, mixed gender or no preference



THE UNIVERSITY
of EDINBURGH

Recommended Areas

- Pollock Halls
- Hermits Croft
- Salisbury Court (longer lease)
- Sciennes
- South Clerk Street

Approx. Travel Times (Minutes)

1 Morningside ↔ Easter Bush



25-30



15

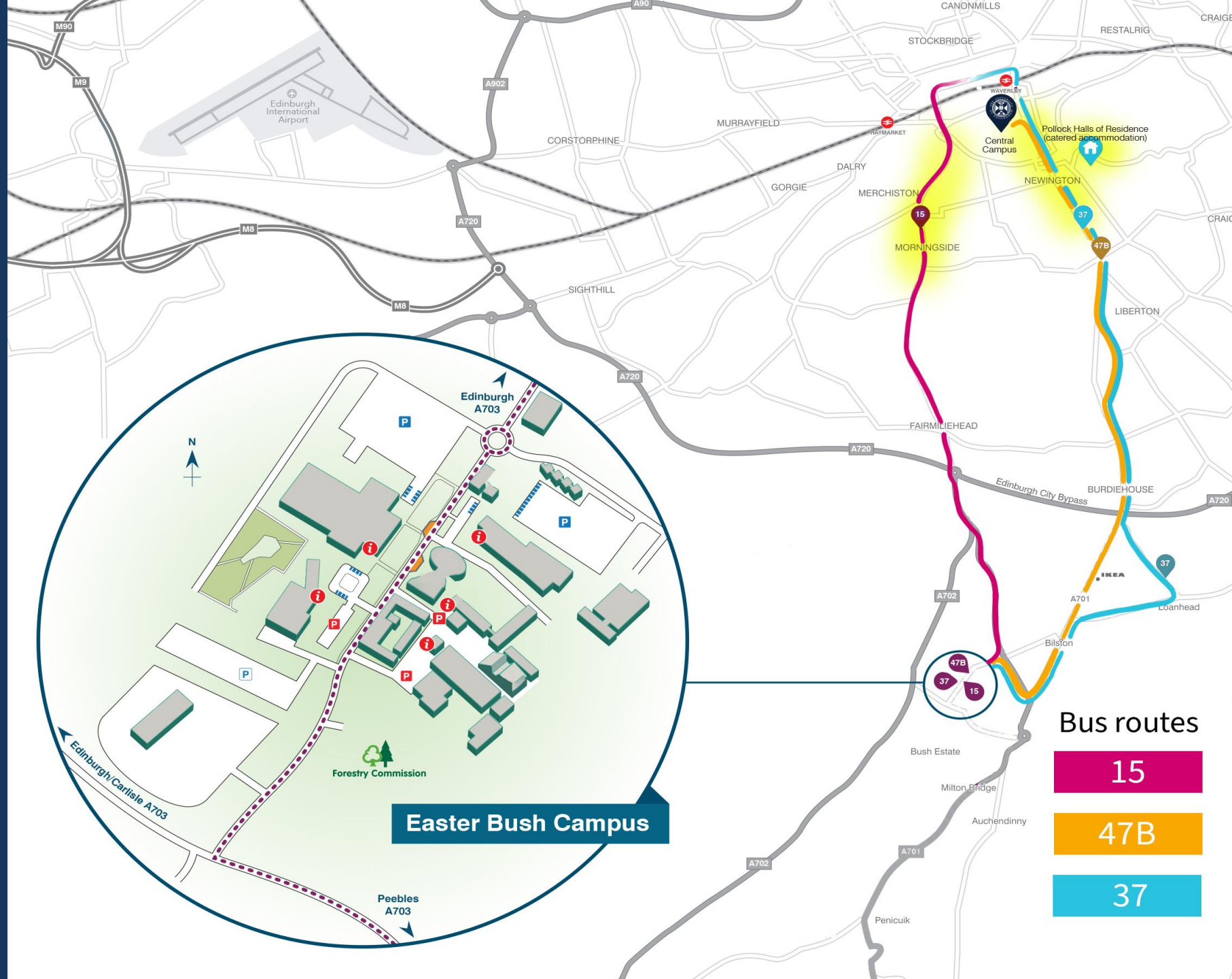
2 Pollock Halls ↔ Easter Bush



40-45



25



Easter Bush Campus

Bus routes

15

47B

37



THE UNIVERSITY
of EDINBURGH

Catered accommodation

Welcome



Pollock Halls campus

- 3 en-suite blocks
- 5 shared blocks

Social

- Common rooms and pantries
- On-site extras



Catering

- 14 meals
- Award-winning food



THE UNIVERSITY
of EDINBURGH

Self-catered accommodation

Welcome



Locations

Newington, Pleasance, Cowgate,
Marchmont and Leith

Flat sizes

- 3 to 12 people per flat



Independent living

- Flexibility in mealtimes
- Social aspect



THE UNIVERSITY
of EDINBURGH

Costs (24/25 Academic year)

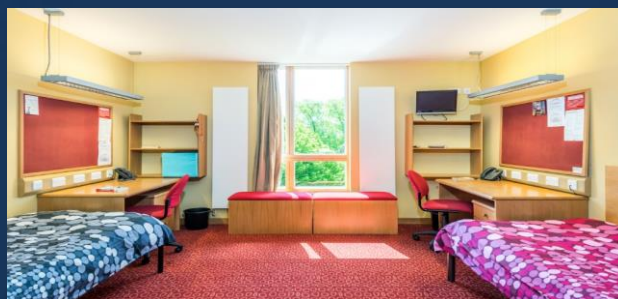
Welcome



**Catered
single rooms
£9,123 to £11,985**



**Self-catered
single rooms
£5,008 to £10,643**



**Catered en-suite
twin rooms
£6,673**



**Self-catered
twin rooms
From £3,271**

www.ed.ac.uk/student-funding



THE UNIVERSITY
of EDINBURGH

Twin rooms

Welcome



- Lower rents
- Sociable aspect

**Conditional Insurance:
Sharing guarantee only**





THE UNIVERSITY
of EDINBURGH

Making your application



Five equal preferences





THE UNIVERSITY
of EDINBURGH

Residence Life

Welcome

...Improving the student experience!



**Inclusive
communities**



**Permanent
support**



**Positive
environment**



THE UNIVERSITY
of EDINBURGH

Moving In



BVMS

- Arrival from the 9 September 2024
- Key collection (various locations)

GEP

- Arrival from the 3 August 2024
- Key collection

www.accom.ed.ac.uk/during-your-stay/moving-in-and-out



THE UNIVERSITY
of EDINBURGH

Accommodation after first year?

Competitive prices

No guarantors



Domus

Landlord & student lettings

www.domus.ed.ac.uk

Peace of mind

**No deposits
or pre-payments**



THE UNIVERSITY
of EDINBURGH

To recap...

Welcome



Offer to study? Apply!



Five preferences



Check your emails



Keep updated



THE UNIVERSITY
of EDINBURGH

For More Information...

Welcome



/uoeliving



'uoeliving'



@uoeliving



'uoeliving'



@uoeliving



+44 (0)131 651 2042

accom.allocations@ed.ac.uk



THE UNIVERSITY
of EDINBURGH

www.accom.ed.ac.uk





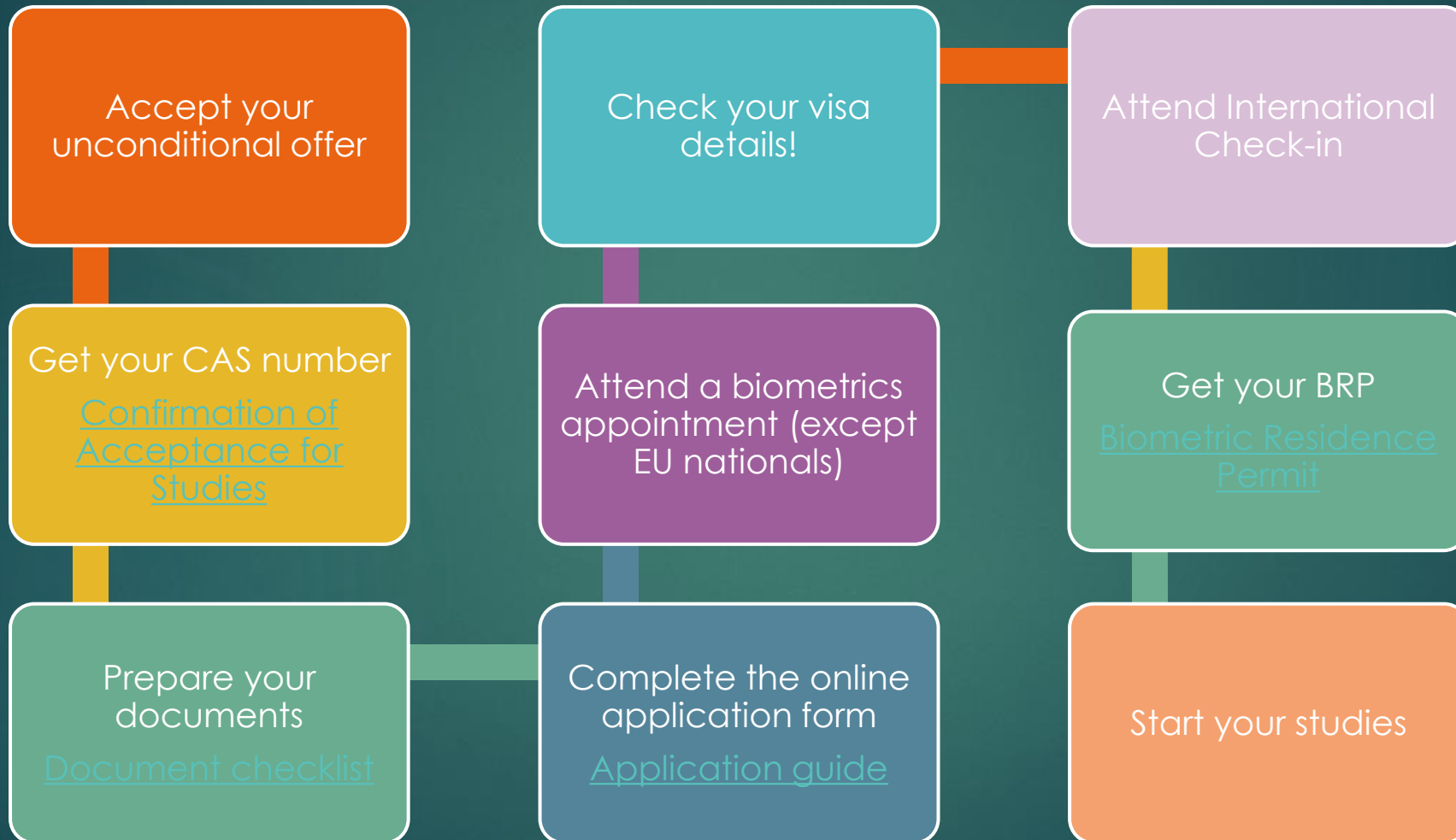
Student Immigration Service

JANE O'LOUGHLIN

What do we do?

- ▶ Provide **free, confidential and impartial advice** on:
 - ▶ Study visa applications
 - ▶ A student's immigration status (rights and responsibilities)
 - ▶ Working during and after studies
 - ▶ Bringing family or dependants with them
- ▶ Work with external bodies such as UKVI and UKCISA to **advocate for international students**
- ▶ **Confirmation of Acceptance for Studies (CAS)** for Student visa applications
- ▶ Annual **International Check-in** process (part of matriculation)
- ▶ **Student Sponsor Licence**: Maintain, and ensure we work within, UKVI Sponsorship Licence Duties

Applying for a Student visa



Financial requirements

How much is needed?

- **Tuition fees** for your first year, as stated in your CAS
- **Living costs:** £9207 for programmes of 9 months or more. If you are doing a shorter programme, £1023 x length of course in months.
- If you are applying inside the UK and have lived here with permission for at least the previous 12 months, you will be exempt from the financial requirement.

What money can I use?

- **Self-funded students:** money in your name or your parents' /legal guardians' names, or in your partner's name if they are present in the UK or applying at the same time as you.
- **Official financial sponsorship:** a scholarship from your home government, a university, an international company or organisation
- **Educational loans:** a loan provided by your government or a government sponsored student loan company. This must be part of an academic or educational loans scheme.

What documents will I need?

- ▶ Confirmation of Acceptance for Studies (CAS)
- ▶ Original valid passport (must contain at least one full page that is blank on both sides, and be valid at the time of your application, and when you arrive in the UK)
- ▶ **You might need:**
 - ▶ Financial evidence
 - ▶ Official translations
 - ▶ Tuberculosis (TB) certificate

Application fees

Visa application fee: £495

Immigration Health
Surcharge: £776 per year

Visa application
centre (VAC) additional fees
Travel costs to/from VAC
Priority service
Tuberculosis certificate
Translations

Rights and Responsibilities?

- ▶ **Your Student visa allows you to:**
 - ▶ **Study a full time programme** with your immigration sponsor (the University of Edinburgh)
 - ▶ **Take additional studies** with your sponsor or other institution (providing it does not interfere with your main course of study)
 - ▶ **Undertake certain types of work** for up to 20 hours per week during term time, and full time during holidays
 - ▶ Bring **dependants** to the UK in some circumstances

Rights and Responsibilities

▶ **You must remember to:**

- ▶ **Comply with all conditions** of your Student visa (no public funds, self-employment/permanent job, work as an entertainer or sportsperson)
- ▶ **Contact us for advice** if there are any changes to your studies or personal circumstances (changing programme, resits, taking a break etc.)
- ▶ **Leave the UK before your visa expires** (unless you have made an application to extend your stay)

Graduate visa

- ▶ Post-study work immigration route for those who have a degree or other relevant qualification from an approved UK Higher Education provider
- ▶ 2 year visa (3 years for PhD graduates) – cannot be extended
- ▶ Allows holder to work or look for work in the UK in any sector, at any level
- ▶ Separate application from the Student visa – must successfully complete studies first
- ▶ Must apply from the UK whilst holding a valid Student visa
- ▶ Study in the UK requirement (full programme if 12 months or a minimum of 12 months for longer programmes required).
- ▶ Application fee £822 + IHS fees (£1035 per year of the visa)
- ▶ Does not lead to settlement but you can switch into other routes e.g. Skilled Worker if eligible
- ▶ Dependants allowed if they already hold leave in this category
- ▶ Study is restricted



Questions?

<https://www.ed.ac.uk/student-administration/immigration/contact-us>



THE UNIVERSITY of EDINBURGH
The Royal (Dick) School
of Veterinary Studies

Thank You

Upcoming Webinar

Student Support and Life in Edinburgh

23 April 2024 / 15:00 BST

EDINBURGH
xtraordinary futures await



vetug@ed.ac.uk



ed.ac.uk/vet